

TAMPINES SECONDARY SCHOOL

Welcome to our

**NATIONAL DIGITAL LITERACY
PROGRAMME BRIEFING**



Overview

- **Device and Funding**
- **Responsible Usage of Devices**
- **Upcoming timelines**
- **Technical Support**

The National Digital Literacy Programme (NDLP)

THE STRAITS TIMES

SINGAPORE | POLITICS



Yuen Sin

PUBLISHED JUN 17, 2020, 7:45 PM SGT



SINGAPORE All secondary school students will receive a personal laptop or tablet for learning by next year - even years ahead of the original target.

The recent move by Education Minister Ong Ye Kung to bring forward the plan is one of the ways the Government, schools and the community are working together to keep social mobility alive, and ensure every individual is afforded the opportunity to do well regardless of their starting point, said Senior Minister Tharman Shanmugaratnam on Wednesday (June 17).

In a national televised broadcast, Mr Tharman, who is also the Coordinating Minister for Social Policies, said social mobility is an integral part of Singapore's identity, and is the reason Singapore has been able to transform its society since the 1960s.

The NDLP was launched in March 2020 to **strengthen their digital literacy and acquire digital skills** needed to navigate an increasingly digitalised world.

The National Digital Literacy Programme (NDLP)

Under the NDLP, every secondary school student will **own a school-prescribed personal learning device (PLD)**. Students may use funds from their **Edusave Account to pay for the PLD.**

The device will facilitate an environment that **encourages personalised learning.**

Intended Outcomes of a Personalised Learning Environment

The use of the Personal Learning Device for teaching and learning aims to:



Support the Development of Digital Literacy



Support self-directed and collaborative learning



Enhance Teaching and Learning



Learning with a Personal Learning Device in TPSS:

At Tampines Secondary School, your child will be

- responsible online users who use the online resources to reflect and advance on his/ her learning.
- able to make use of online information to infer and make informed decisions to problem solve issues in real world context.
- well versed in the use of technology to choose the right tools for learning and communication.



Device and Funding Information

Tampines Secondary School's Personal Learning Device

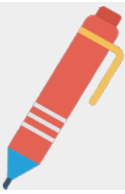


**Acer Chromebook Spin
R752TN-C1MT**

The school chose the device because of:

- T&L Affordances
- Portability
- Durability
- Affordability

Tampines Secondary School's Personal Learning Device



Intel N200 Processor
8GB RAM
64GB Storage

The school will be using the **Acer Chromebook Spin R756TN Convertible (ENHANCED)** for teaching and learning.

Estimated total Cost with GST:
\$570 [3 years warranty]

11.6" screen size
12 hours battery life
1.35kg
Active stylus
Screen Diagonal Size: 11.6 inch

Insurance Coverage



The package includes a **3-year warranty, and 3-year insurance** which includes:

Insurance Coverage	Claimable
<ul style="list-style-type: none">● Fire● Lightning● Power Surges● Accidental e.g water spillage, drop etc● Theft due to forcible entry● Robbery <p>* Accidental loss will not be covered by insurance.</p>	2 repairs or 1 replacement (3-year insurance)

Funding Support for Singapore Citizen (SC) Students

- **The cost of the device bundle can be paid using your child's/ ward's Edusave account, after setting aside provision for payment of miscellaneous fees.**
- **Edusave top-up of \$200 in year 2020 to 2022, and \$300 in 2023, to all eligible Singaporean students.**
- **Annual \$290 credited into the Edusave account for Secondary School students.**

Funding Support

- Subsidies are available for students who require funding support to purchase a PLD.

Students eligible for subsidy	Income criteria	How to Apply for Subsidy
Students under MOE FAS	Gross Household Income (“GHI”) is \$3,000 or less, or Per Capita Income (“PCI”)* is \$750 or less	No action required. Automatically subsidised for the PLD.
Students under School-based FAS	GHI is \$4,400 or less, or PCI is \$1,100 or less	Approach the school’s General Office to apply for a subsidy.
Students who are currently <u>not</u> under the MOE FAS or School-based FAS	GHI is \$4,400 or less, or PCI is \$1,100 or less	Approach the school’s General Office to apply for a subsidy.

** PCI refers to the GHI divided by the total number of family members in the household.*

- For more details on financial assistance, please approach the school admin team.

Responsible Usage of Devices

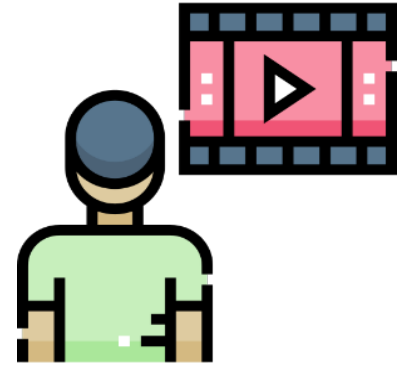
Cyber Wellness Concerns Identified by International Studies



Harmful Online Content



Distraction from Learning



Excessive Screen Time

Supporting Students in the Safe and Effective Use of the Devices

The school has in place measures **to enable a safer digital environment for learning with the use of PLDs.**

- A. Classroom routines and Acceptable Use Policy (AUP)
- B. Cyber Wellness Education in CCE
- C. Partnering parents/ guardians to support students in their use of technology for learning.
- D. Device Management Application (DMA) to support a safer digital environment for learning.

Supporting Students in the Responsible Use of the Devices

A. Classroom Routines and Acceptable Use Policy (AUP)

Parents could refer to the AUP when helping to manage his/her child's use of the PLD. The AUP will help your child to **understand the expectations of device use to enable a conducive learning environment.**

It also **outlines the consequences** for violating the policy.

Tampines Secondary School's Acceptable Use Policy (AUP)

Device Use Policy

Hard copy to be submitted to Form Teachers by 15 Jan, Monday.



1. Taking Care of Your Chromebook

Students are responsible for the general care of the Chromebook. If their Chromebooks are broken or fail to work properly they can look for the Desktop Engineer, Mr Raj at level 2 [Blk A, 02-03, Staffroom next to level 2 DT workshop]. If a Chromebook is needed in the intervening period, please check with your form teacher on the availability of loan.

General Precautions:

- No food or drink is allowed next to your Chromebook at all times.
- Cords, cables, and removable storage devices must be inserted carefully into the Chromebook.
- Students should never carry their Chromebook while the screen is open unless directed to do so by a teacher.
- Chromebooks should be shut down when not in use to conserve battery life.
- Chromebooks should never be shoved into a locker or wedged into a book bag as this may break the screen.
- Do not expose your Chromebook to extreme temperature or direct sunlight for extended periods

Cyber Wellness Education

B. Educating students on Cyber Wellness (CCE)

Greater coverage of Cyberwellness lessons during CCE periods.

Topics covered include:

- **Cyber Use**
- **Cyber Identity**
- **Cyber Relationships**
- **Cyber Citizenship**
- **Cyber Ethics**

Cyber Wellness Education

Throughout their Secondary School education, students will learn about:

- Balanced use and self control
- Cyber bullying and Upstanding
- How to be a positive influence online
- How to handle online falsehoods
- How to manage social media (peer influence, emotions, echo chambers)
- Online relationship and Online safety (grooming, self disclosure)
- To respect intellectual property rights

Cyber Wellness Education



In addition, through various programmes in school, students will continue to learn to be **respectful, safe, and responsible users of technology.**

**Cyberwellness
Assembly Talks**

**Nurturing leaders who can
support Cyberwellness
Initiatives**

C. Partnering parents/ guardians to support students in their use of technology for learning.

As parents/ guardians, you can also help in the following ways.

- Model good digital habits for your child/ ward.
- Know your child/ ward well, and have conversations with your child/ ward about safe and responsible use of technology.
- Navigate the internet together to understand their usage.
- Set ground rules for internet/ device use.
- Encourage your child/ ward to use productivity tools for their learning.

Cyber Wellness Education

To support you in keeping your child safe online, you may refer to these resources:

- go.gov.sg/moe-cyber-wellness
- <https://beta.moe.gov.sg/programmes/cyber-wellness/>
- go.gov.sg/better-internet-sg
- sure.nlb.gov.sg/
- help123.sg

Supporting Students in the Responsible Use of the Devices

D. Device Management Application

As per MOE guidelines, device management application (DMA) software will be installed on your child's device to provide a safe learning experience for your child, and to prevent misuse of the device.

The DMA will be **funded by MOE** and will be **uninstalled** from the device **when the child graduates/ leaves the school.**

More information can be found in the Parents' Letter to be sent through Parents' Gateway by 08 Jan, Monday.

*Installation of the DMA will be performed after the collection of the device.
Students will be guided on the installation.

Supporting Students in the Responsible Use of the Devices

Default	Option A	Option B
In-school DMA settings will continue after school hours	Parents/Guardians can modify the DMA settings after school hours	Parents/Guardians can choose to disable DMA after school hours
For parents/guardians who want their child's/ward's use of the device to be restricted only to teaching and learning, and prefer to leave it to the school to decide on DMA settings after school hours.	For parents/guardians who want more leeway over the use of the device, and prefer to take charge of the level of restrictions for their child's/ward's use of the device after school hours.	For parents/guardians who do not want their child's/ward's use of the device to be regulated by DMA after school.

Upcoming timelines

What's Next

For Singapore Citizens



Time Frame	Activity
By 15 Jan, Mon	Parental Consent for Purchase and Edusave Withdrawal https://go.gov.sg/pdlpadmin Online FormSG
By 15 Jan, Mon	Signing of Acceptable Use Policy (AUP) Hard Copy
March to June	Collection of Devices

The Parents' Letter will be sent through Parents' Gateway by 08 Jan, Monday.

What's Next



For Permanent Residents (PR) / International Students (IS)

Time Frame	Activity
By 15 Jan, Mon	Parental Consent for Purchase Signing of Acceptable Use Policy (AUP)
By 04 Mar, Mon	Payment via Giro / PayNow/ Cheque / AXS machine/ Cash
March to June	Collection of Devices

Hard Copy

The Parents' Letter will be sent through Parents' Gateway by 08 Jan, Monday.

Collection of Devices

Your child/ward will be collecting his/her devices **from end of March 2024 to June 2024**

- Parents could submit the **'Authorisation Form'** if you would like to appoint your child/ward to collect his/her device personally

Tampines Secondary School

Authorisation Form

Important Note: The computing device must be checked at the point of collection to verify that it is in good working condition. Accordingly, parents/guardians who are concerned that their child/ward will not be able to properly verify the condition of the computing device should **not** authorise their child/ward as their proxy and instead arrange to either collect the computing device personally or appoint an adult proxy. Please note that once the proof of receipt is signed, the risk of loss or damage to the computing device, and title to the computing device, will be passed to you.

I, Parent/Guardian* of _____ (name of child/ward*) of class _____, authorise _____ ("Proxy") to collect the Personal Learning Device (PLD) issued under the Personalised Digital Learning Programme (PDL) on my behalf.

I am aware that the Vendor issuing the computing device will run through a device check list with my Proxy. The check list will detail what my Proxy should look out for when collecting the computing device to verify that it is in good working condition.

I authorise my Proxy to check the computing device on my behalf and thereafter sign the proof of receipt on my behalf to confirm that the computing device is in good working condition.

Name of Parent/Guardian*

Date

Signature

* Please delete as appropriate.

Important Contacts/ Helplines



To access/find out more about...	Contact/Helpline
This deck of slides	Tampines Secondary School Website https://tampinessec.moe.edu.sg/
Edusave Balance	6260 0777
Financial assistance available	67835423 Mdm Angeline [ext 805]

Technical Support for Student's Devices



Technical support will be provided to students through:

- IT Manager and Desktop Engineers during curriculum hours
 - ✓ Basic trouble-shooting of device issues
 - ✓ Connectivity issues
- Acer Contractor's service centres
 - ✓ Repair of devices (hardware issues)

Should you have further queries, please
contact Ms Neo Shufen at
neo_shufen@moe.edu.sg

Thank you